



**Blast Machine SCW-1028 with Wetblast Head KB-25**

- 20 liter capacity
- Remote controls RMM 50
- Water separator
- 1/2" piping

**Blast Machine SCW-1638**

- 60 liter capacity
- Remote controls RMS 2000
- Water separator
- 1" piping



**Blast Machine SCW-2040 S**

- 100 liter capacity
- Remote controls RMS 2000
- Water separator
- 1-1/4" piping

## Options

- Special blast machines in sizes between 20 and 6000 liter capacity
- Blast machines with special piping
- Double chamber machines

**Blast Machine SCWB-2452**

- 200 liter capacity
- Remote controls RMS 2000
- Water separator
- 1-1/4" piping



**Big Clem**

- 4,500 liter capacity
- Supports 4 blasters
- Remote controls PVR-A and PVR-G



## Options

- Blast machines with special pneumatic and electric controls
- Blast machines with additional control fittings
- Multiple operator machines
- Variety in valve selection
- Angled cone selection



**Pneumatic Control Valve**

Activates pressurization and depressurization of blast machines.

- Fits:
- RMS 2000



**Pneumatic Deadman Handle RLX II**

**Pneumatic Deadman Handle "Airmiser"**

Faster response; lower air consumption.



## Options

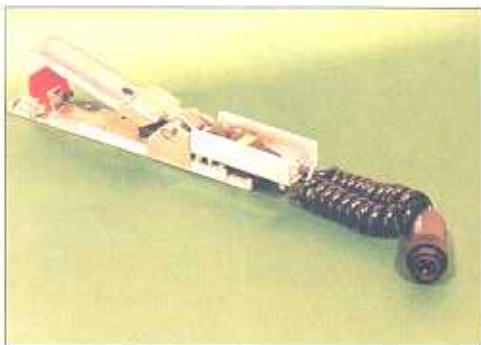
- Pneumatic deadman handle with immediate abrasive cut-off
- Pneumatic deadman handle with special functions according to customer request

## Electric Deadman Handle RLX-E

Responds faster than pneumatic handles. Includes integrated microswitch and control wire plug.

Fits:

- RMS 2000 •
- RMM 50 •

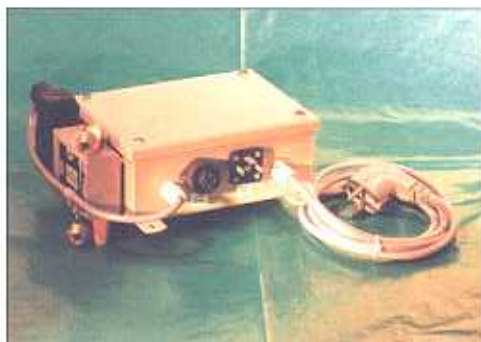


## Electric Pneumatic Box RME

Controls one or more functions of blast machine. Start/stop, abrasive cut-off, cycle time.

Fits:

- RMS 2000 •
- RMM 50 •



## Options

- Electrical deadman handle with multiple special functions
- Electrical box for dual control functions
- Electrical box with adjustable time relays
- Electrical box with customer specified functions

## Protects Operator from the hazards of blasting

- Blast suit
- Leather gloves
- Air fed helmet
- Breathing air filter



## Apollo 50 & 60 Helmets

- Circulates air around operator's head
- Large view area
- Impact protection
- Adjustable fit
- Plastic lenses
- Quiets incoming air



## Apollo 100 Helmet

- Economical
- Meets international safety regulations



## Options

Clemco suits can be customized to meet special customer requirements.

## CPF-Air Filter

- Removes oil mist and water
- Removes particulates to 0.5 micron
- CPF-20 for 1 operator
- CPF-80 for up to 4 operators



- **Air control valve**  
Controls volume of incoming air
- **Cool air tube**  
Cools incoming air
- **Climate control tube**  
Cools or warms incoming air



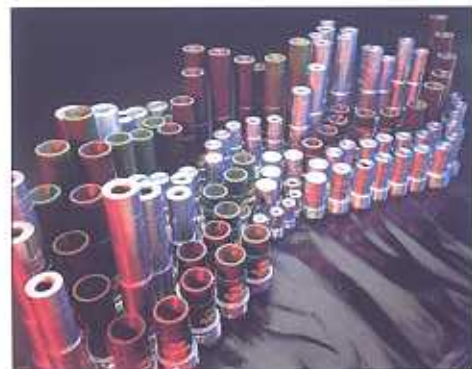
## Blast Light

- Enhances operator visibility for optimum blasting quality where light is limited
- 12 Volt or 24 Volt, 20 watt



## Options

- Headlamps for operator helmets
- CO detectors and CO alarms



**Measurement and Inner Contour**

- Inner diameter: 3-16,0 mm
- Length: 45-230 mm
- Inner shape: Venturi and straight bore
- Entry: 25 and 32mm

**Nozzle Construction**

- Special design offers nozzle liner for impact protection
- NEW!**

**Special Nozzles**

- Angle nozzles with single or multiple orifices
- Flange mount nozzles fit quick coupling nozzle holders

**Jacketing**

**Materials**

- Aluminum
- Urethane
- Rubber

**Liner Materials**

- Silicon Carbide
- Tungsten Carbide
- Boron Carbide



**Nozzle Holder**

- Nylon
- For nozzles with a 25 mm or 50 mm thread
- For hoses 13 x 7, 19 x 7, 25 x 7, 32 x 8, 38 x 9, 42 x 9

**Metal Coupling**

- Includes safety pin
- Sandcast construction

**Materials:**

- Bronze
- Aluminum
- Cast Steel

**Nylon Coupling**

- Injection molded for consistent shape
- Integral steel safety spring

**Blast Hose**

**Features:**

- Inner tube of wear-resistant rubber or super wear-resistant rubber quality
- Intermediate layers for higher pressures or high flexibility
- Working pressure: 12 bar

**Hose Size Options: I.D. x wall thickness (mm)**

- 13 x 7 • 19 x 7 • 25 x 7 • 32 x 8 • 38 x 9 • 42 x 9
- Any length up to 60 meters in one continuous piece

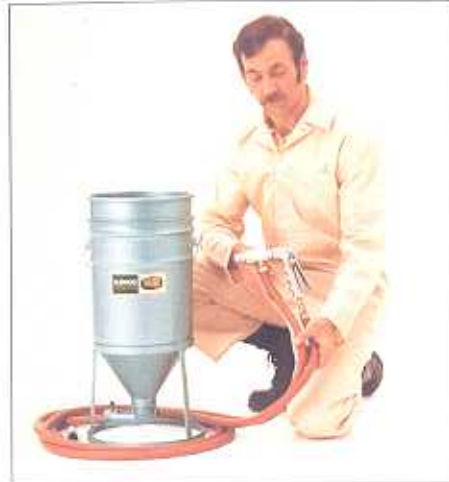


**Options**

- Special couplings
- Hoses in special sizes

**Suction Gun SG 300**

- Hand-portable
- suction blasting
- Spot blasting
- and touch-up work
- Low air use
- Precise metering of abrasive
- Consumes 0,2 to 3,0 m<sup>3</sup>/m at 6 bar



**Power Injection Gun**

- Hand-portable, high performance suction blasting
- Spot blasting, touch-up and production blasting
- Pick-up wand fits any container, including bagged abrasives

**Air Consumption Chart**

Air volume consumption (m<sup>3</sup>/min)

Nozzle diameters (mm)

(bar)	3,0	4,5	6,0	8,0	9,5	11,0	12,5
1	0,10	0,25	0,40	0,65	0,95	1,35	1,90
2	0,20	0,50	0,80	1,30	1,80	2,55	3,50
3	0,30	0,65	1,15	1,90	2,65	3,60	4,85
4	0,35	0,80	1,50	2,45	3,40	4,60	6,05
5	0,40	0,95	1,80	2,95	4,15	5,55	7,25
6	0,50	1,10	2,05	3,40	4,85	6,45	8,40
7	0,60	1,25	2,30	3,90	5,55	7,35	9,55
8	0,65	1,40	2,55	4,35	6,20	8,20	10,65
9	0,70	1,55	2,80	4,85	6,90	9,10	11,75
10	0,80	1,70	3,05	5,30	7,55	10,00	12,90
11	0,85	1,85	3,30	5,80	8,25	10,85	14,00
12	0,90	2,00	3,55	6,25	8,90	11,70	15,15

**Air Consumption (m<sup>3</sup>/m)**

Pressure (bar)	4	6	8	10	12
Power Injection Gun	3,0	4,2	5,4	7,3	8,0

**Suction Gun**

Jet	Nozzle	
1,5mm	3mm	0,2
3,2mm	8m	0,7
4,5mm	9,5mm	1,6
6,0mm	12,5mm	3,0

## DUST FREE BLAST EQUIPMENT

10

### *Educt-O-Matic*

- Hand-portable suction blast and recovery
- Built-in media reclaimer and screen
- Head rotates 360°
- 2 position trigger starts vacuum before blasting



Shown with optional dust collector

### *Dust free Pneumatic Cart-type Unit*

- 40 liter blast machine (model HS-P)
- 40 liter media silo
- Cartridge collector
- Dust free blast and recovery head



### *Options*

- Special blast head adaptor for both units
- Dust collector for the Educt-O-Matic

## INTERNAL PIPE CLEANING SYSTEM

11

### *Spin Blast*

For internal cleaning of pipes. Two models cover range of diameters from 300 to 1520mm.

- Adjustable centering carriage
- For standard blast machine systems
- Tungsten or boron carbide nozzles



### *Hollo Blast*

Pipe diameters from 50 to 300 mm.

- Adjustable centering carriage
- Tungsten or boron carbide nozzle and deflector



### *Hollo Blast Jr.*

Pipe diameters from 19 to 50 mm.

- 4 sizes of centering collars
- Reducer, coupling, and tungsten carbide deflector



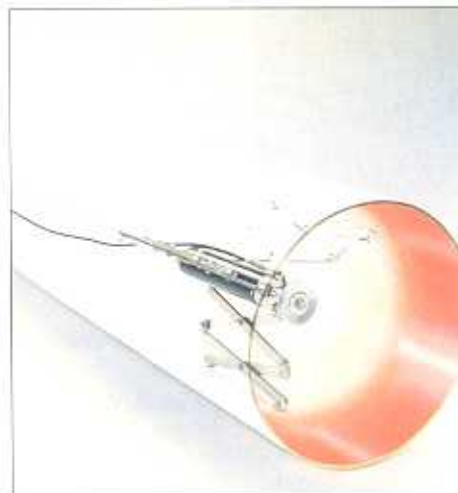
## INTERNAL PIPE PAINTING SYSTEM

12

### *Orbiter*

For internal coating of pipes. Two models cover range of diameters from 90 to 950 mm.

- Air powered centering carriage
- Airless pump for applying coatings
- Tungsten carbide paint tip



### *Control Gun*

- Fingertip control of coating application
- Adjusts centering carriage
- Controls air motor speed
- Works with most airless spray pumps (not included)



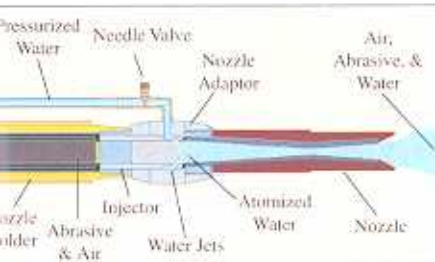
### *Options*

- High pressure paint hoses in a variety of lengths



## Wet Blast

- Attaches to existing machine.
- Reduces dust at blast site
- Air powered
- water pump
- Water shut-off at the nozzle



## Wet Blast Head

- 3 high pressure water jets thoroughly wet abrasive just before it exits the nozzle

## Vet Blast Head, KB-52

- Injection of high pressure water (0-12 bar for use with pump)



## Varia-Jet Blast Head

- Injection of water (pressure 0 - 2 bar) (0-2 bar for use with or without pump)



## Soft King

- Covers wide variety of applications
- Dry and wet blasting of delicate surfaces
- Designed for lightweight media, but can use most common media



## Blast Pipe

- Special nozzle adaptor:
- Reduces water consumption
  - Increases blast performance
  - Improves wetting of abrasive



## Typical Cleaning Applications

Application	Blast Media	Pressure (bar)
Cleaning buildings	stone powder, fine glassbeads, soda bicarbonate	<4
Removing graffiti	stone powder, soda bicarbonate and mixings	<4
Selective coatings removal without damaging substrate	stone powder, plastic medias, fine glass beads and mixings	0.2 - 3
Coating removal from invulnerable materials	stone powder, plastic medias, fine glass beads and slags	1-6
Cleaning / degreasing of metals	fine glass beads and soda bicarbonate	1-8

Soft King is available without the water pump for special applications. Special blast abrasives and medias are also available.

## MB-220

- Abrasive Recovery System.
- 200 liter Blast machine
  - Hopper
  - Silo
  - Vacuum pump
  - Filter cartridge



## MB-1600

### Suction Unit

- Cyclone, dust collector and vacuum pump
- Use with

hoppers, silos and bulk blast machines



## Dust Collectors

- Filters to 0.5 microns
- Units from 2 to 100 cartridges in size
- Self cleaning pulse
- Sealable dust drums for easy disposal
- Portable or permanent installation



## MB Tower

- Suction Silo
- Abrasive Cleaning
- Big Clem
- Suction Unit
- Dust Collector



## Options

- Complete suction abrasive recovery systems built to customer specifications
- Air dryer and aftercooler
- Special fittings and couplings
- Suction and vacuum hoses
- Vacuum pumps and high performance fans





### Hopper

With bucket elevator, abrasive cleaner and blast machine.

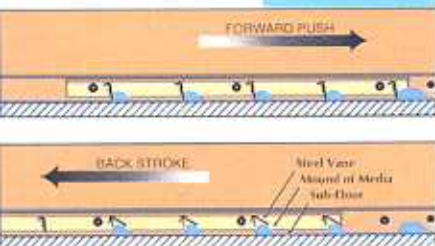
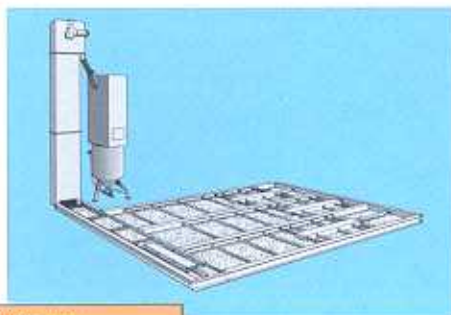
### M-Section

With complete abrasive suction recovery.



### Flat-Trak

Low profile floor with bucket elevator and abrasive cleaner. Rugged, steel vanes push media forward with up to 1050 N (200 kp) of force.



As the frame moves back, the vanes ride up over the mounds of media, then fall back into position for the forward push.



### BNP Cabinets

- Available in different sizes
- Suction or pressure blast
- Large view window
- Full size doors
- Neoprene coated fabric gloves

### Pulsar Cabinets

All-in-one blast cabinet with enclosure, reclaimer, and cartridge dust collector. Saves space • Suction or pressure • Two sizes • Track Assembly and Hopper optional



### A-200

Automated Cabinets.

- Indexing turntable
- Programmable
- Versatile
- Efficient

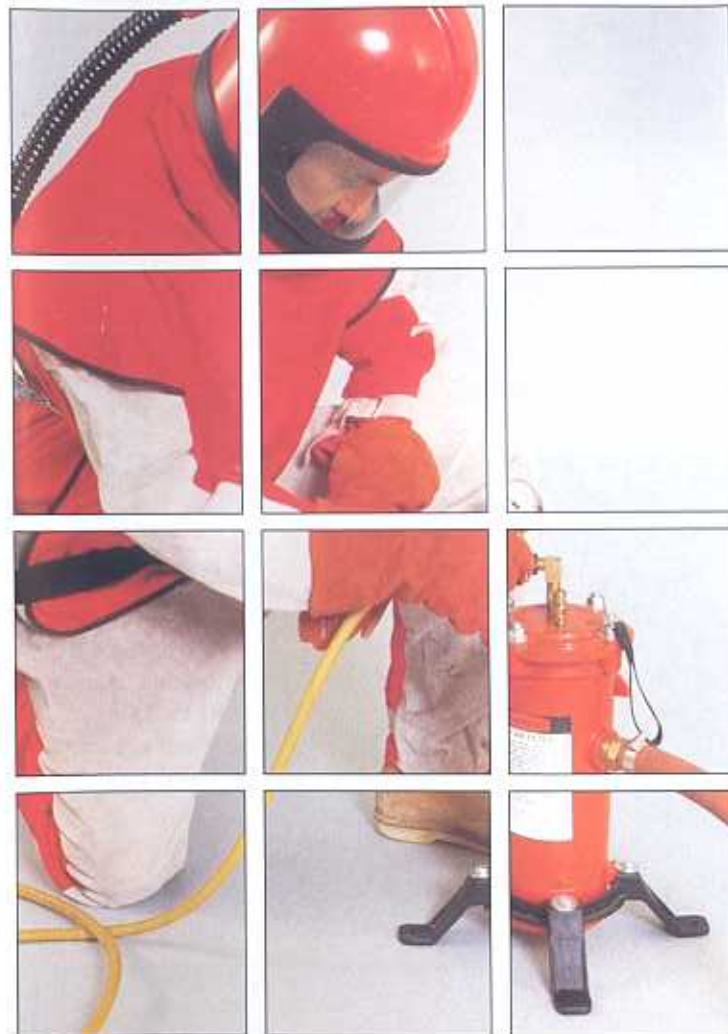


### Gate

For long work pieces.

# CLEMCO

## ABRASIVE BLAST EQUIPMENT



### Options

- Tumble blast machines
- Automatic turntable units
- Automatic cabinets built to customer specifications
- Manual and powered turntables



For a FREE copy of Clemco's Industrial Facility Planning Guide, use the enclosed response card.

