

Order picking at reach heights of up to 5.30 m

Extremely manoeuvrable thanks to sensitive steering

Adjustable tray with 100 kg capacity

Automatic closing doors enable additional safety in raised position



## EKM 202

### Small parts order picker (100 kg)

The EKM 202 small parts order picker is ideal for multiple applications. The EKM is an efficient alternative to conventional ladders, particularly for retail outlets as well as for light maintenance applications or picking tasks without a pallet. The stable mast allows reach heights of up to 5.30 m, so items can be removed from the racking up to the third rack level, price tags exchanged or ceiling lamps replaced.

The operator is also always safe at high lift. The automatically closing doors ensure the necessary safety, as lifting is only possible when the doors are closed. An optional lock for the doors provides additional security. In this instance, not only are the doors closed automatically, but also locked as soon as the platform is raised. Only when the platform has been completely lowered, can the doors be opened again.

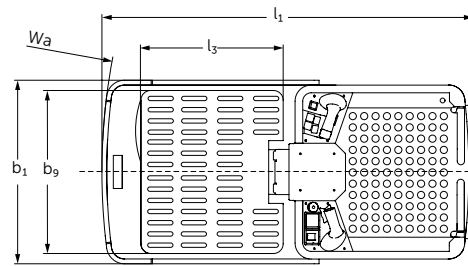
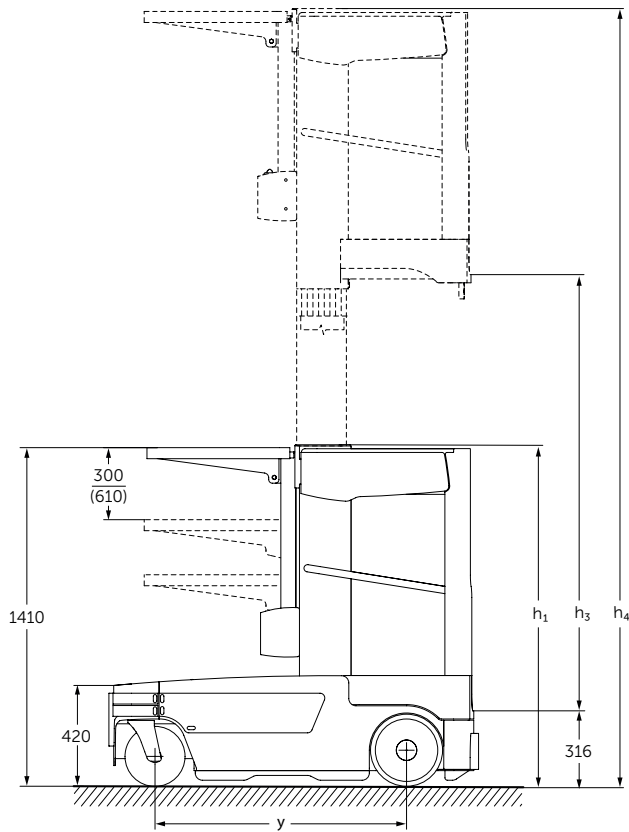
Thanks to its compact dimensions of only 760 mm and the low stand height, the EKM is also able to easily pass along narrow shop aisles and through low doors.

Simultaneous lifting and driving to the direct control of items in the racking is possible due to the ergonomic configuration of the controls. The operator can securely place the items on the storage tray and then proceed directly to the next item. If on one occasion, several items are to be picked at once, the storage tray can be adjusted in height to ensure there is always good visibility in the direction of travel.

The generously designed workstation provides the operator with a comfortable standing position, both while driving and when standing sideways to remove the goods. The sensor mat on the floor supports mobility in the workstation so that the position on the stand-on platform can be freely selected.

Thanks to its compact dimensions, versatility and improved occupational safety, the EKM offers more protection as well as relieving the strain on the employees, while at the same time significantly increasing productivity.

# EKM 202



# Technical data in line with VDI 2198

Identification	1.1	Manufacturer (abbreviation)		Jungheinrich
	1.2	Model		<b>EKM 202</b>
	1.3	Drive		Electric
	1.4	Manual, pedestrian, stand-on, seated, order picker operation		Order pickers
	1.5	Load capacity/rated load	Q t	0.1
Weights	2.1	Service weight	kg	615
Wheels / frame	3.2	Tyre size, front	mm	250x50
	3.3	Tyre size, rear	mm	300x65
	3.5	Wheels, number front/rear (x = driven wheels)		2/2x
Basic dimensions	4.4	Lift	$h_3$ mm	3,000
	4.5	Extended mast height	$h_4$ mm	4,419
	4.8	Seat height/stand height	$h_7$ mm	314
	4.14	Standing height raised	$h_{12}$ mm	3,314
	4.19	Overall length	$l_1$ mm	1,520
	4.21	Overall width	$b_1/b_2$ mm	760
	4.35	Turning radius	$W_a$ mm	1,250
	4.38.2	Order picking height	mm	5,314
	4.38.12	Platform length	$l_3$ mm	595
4.38.12.2	platform width b9	mm	681	
Performance data	5.1	Travel speed, laden/unladen	km/h	6 / 6
	5.2	Lift speed, laden/unladen	m/s	0.25 / 0.25
	5.3	Lowering speed, laden/unladen	m/s	0.21 / 0.21
Electrics	6.1	Drive motor, output S2 60 min.	kW	1.0
	6.2	Lift motor rating at S3 10%	kW	2.2
	6.4	Battery voltage/nominal capacity K5	V/Ah	24 / 192
	6.5	Battery weight	kg	120

# Benefit from the advantages



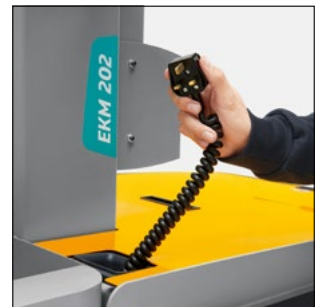
Generously designed storage tray



Safe even at full height



Controls and storage tray in view at all times



On-board charger with integrated spiral cable for standard Plugs ,

## Operation

- Capacitive sensors require two-handed operation, so that the operator remains within the truck while driving.
- The newly designed steering spinner ensures a secure hold and also facilitates precise driving due to the steering angle.
- Reverse travel does not present a problem: Safe driving in a straight line due to defined zero position, slight movements for small curves and big movements for large 90° curves.
- Travel switch with thumb control avoids twisting the entire hand, thus achieving an ergonomic hand position. The rest of the surface of the handlebar can be held onto with the right hand.
- Other buttons enable the main lift and storage tray to be lifting and lowered.

## Lifting and reaching

- Even with reach heights of up to 5.30 m, the mast design provides an ideal all-round view.
- The chain-free lift requires minimal parts and very little maintenance.

- Softlanding ensures gentle depositing of the platform when lowering – no shocks for the protection of the operator and easy identification of the lowered position for exit.

## Storage options

- With a capacity of up to 100 kg, objects can be easily transported upwards or securely down from the racking on the storage tray.
- The long slots in the storage tray provide a clear view downwards when in the raised position, in order to be able to clearly see people in the working vicinity. Despite this, the tray provides sufficient space to also transport small objects safely.
- The electrically adjustable storage tray with an adjustment range of 610 mm allows ergonomic loading of the storage tray from outside (optional) in the low position. Furthermore, the large adjustment range ensures good visibility to the front, even when several parts are deposited.
- Other special storage trays, e.g. for doors, are individually available.

## Safety

- Stable mast for added safety even when raised.
- Doors are automatically closed as standard when entering or leaving the platform so the operators can only lift the platform when the doors are closed.
- Additional optional door locking: The doors are not released again until the platform has been completely lowered. This prevents unwanted opening in the raised state and the operators have direct feedback as to whether the platform is lowered when leaving the truck.

## Robustness

- Robust steel frame with additional bumper protects against damage to the truck.
- No plastic parts in external areas which can be damaged.

## Battery and charging

The EKM provides sufficient energy to complete the duties of the day:

- Maintenance-free 192 Ah battery.
- The on-board charger with integrated spiral cable fits any 230 V socket – no more searching for the charging cable.

## Jungheinrich Aktiengesellschaft

Friedrich-Ebert-Damm 129  
D-22047 Hamburg  
Telephone +49 40 6948-0  
Telefax +49 40 6948-1777

info@jungheinrich.com  
www.jungheinrich.com

The German production facilities in Norderstedt, Moosburg and Landsberg are certified. **ISO 9001**  
**ISO 14001**

Jungheinrich fork lift trucks meet European safety requirements.



**JUNGHEINRICH**  
Machines. Ideas. Solutions.